

How do we manage the complexities  
of global cargodynamics?

**Excellence,  
one transaction at a time.**



# GENERAL INFORMATION

## FORWARDING SOLUTIONS

*recommended to:*

YOU ARE HERE...

**COMPANY**

PROJECTS

EXPORT

IMPORT

## TABLE OF CONTENTS

(Page numbers clickable)

Company Information . . . . .	<a href="#">04</a>	Project References . . . . .	<a href="#">15</a>
V.A. Germany . . . . .	<a href="#">05</a>	Customs Clearance . . . . .	<a href="#">16</a>
GER Company Information . . . . .	<a href="#">06</a>	Export . . . . .	<a href="#">17</a>
GER Company Structure . . . . .	<a href="#">07</a>	Export Introduction . . . . .	<a href="#">18</a>
Statistics Review . . . . .	<a href="#">08</a>	Export Services . . . . .	<a href="#">19</a>
Service & Quality . . . . .	<a href="#">09</a>	Export Clearance . . . . .	<a href="#">20</a>
Forest Products . . . . .	<a href="#">10</a>	Import . . . . .	<a href="#">21</a>
References & Memberships . . . . .	<a href="#">11</a>	Import Introduction . . . . .	<a href="#">22</a>
Project . . . . .	<a href="#">12</a>	Import Services . . . . .	<a href="#">23</a>
Project Process . . . . .	<a href="#">13</a>	Customs Clearance . . . . .	<a href="#">24</a>
Project Process 2 . . . . .	<a href="#">14</a>		

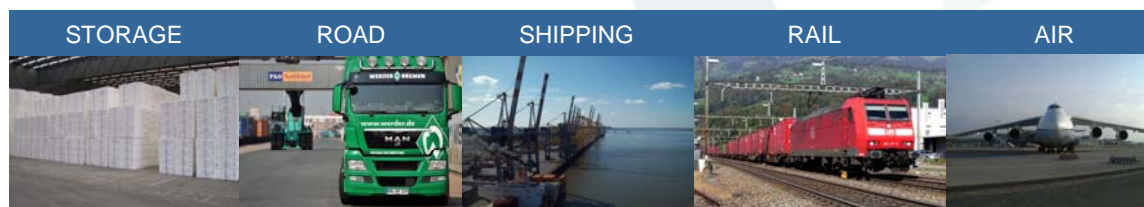
# COMPANY GLOBAL

Excellence, one transaction at a time.

## Well known for excellence performance all over the world

V. Alexander is an internationally known forwarder offering worldwide handling, storage, shipping, air, road and rail transport solutions within the framework of [import](#), [export](#) and [project forwarding](#).

We specialize in the transport of forest products like pulp, paper and wood/lumber, project shipments like submarines and anything else that won't fit into a container, and we coordinate, handle and transport your general cargo to any destination of your choice.



### V.ALEXANDER Offices worldwide

**Bremen**, Phone: +49 421 566 46-0, Fax: +49 421 566 46-200, Customerservice-bremen@valexander.com | **Dallas**, Phone: +1 972 421 0-660, Fax: +1 972 421 0-662, dallas@valexander.com  
**Knoxville**, Phone: +1 865 9707-461, Fax: +1 865 9707-490, knoxville@valexander.com | **Tri-Cities**, Phone: +1 423 967-6145, Fax: +1 423 323-3167, tricities@valexander.com | **Chicago**, Phone: +1 847 9255-480, Fax: +1 847 9255-481, chicago@valexander.com | **Memphis**, Phone: +1 901 795-7761, Export Fax: +1 901 794-7906, Import Fax: +1 901 363-1054, memphis@valexander.com | **Washington**, Phone: +1 703 674-2311, Fax: +1 703 834-2998, washington@valexander.com | **Rep. Office Hong Kong**, Phone: +852 9343-4343, Fax: +852 2382-3263, hongkong@valexander.com | **Nashville**, Phone: +1 615 885-0020, Export Fax: +1 615 391-0692, Import Fax: +1 615 885-1465, nashville@valexander.com

## Over six decades of success

Est. 1946, Vaniah Alexander in Memphis, TN

Incorporated 1960, a Tennessee Corporation subsidiary

Subsidiary NVOCC: Worldbridge

Offices all over the world:

**Europe** [Bremen, Germany]

**North America** [Dallas, TX / Knoxville, TN / Memphis, TN / Nashville, TN / Tri Cities, TN / Washington, DC / Chicago, IL]

**Asia** [Repr. Office in Hong Kong, China]

**Worldwide agency network with offices in all global key markets**



USA licenses: Customs Broker: CHB 3416 | Freight Forwarder: OTI 2410 P | NVOCC: OTI 15462 N

YOU ARE HERE...

COMPANY

PROJECTS

EXPORT

IMPORT

BREMEN, GERMANY

# EUROPEAN HEADQUARTERS



Excellence, one transaction at a time.



Phone: +49 421 566 46-0  
Fax: +49 421 566 46-200  
Customerservice-bremen@valexander.com

# EUROPEAN HEADQUARTERS

Excellence, one transaction at a time.

## Located in the Hanseatic City of Bremen

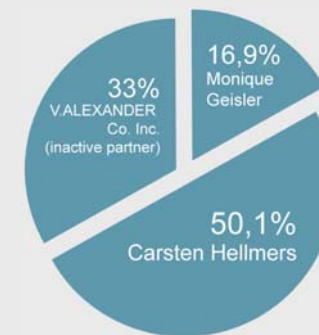
The Bremen office is the first European V.Alexander office and started operations on October 1, 2006 with 5 employees

Since 2009 V. Alexander Bremen has been certified according to ISO/IEC 9001:2008

The office in Bremen is a German GmbH and was established with 100% private equity

Current number of employees: 24

### THE SHAREHOLDERS



of  
V.ALEXANDER  
International  
Logistics  
GmbH Bremen



YOU ARE HERE...

COMPANY

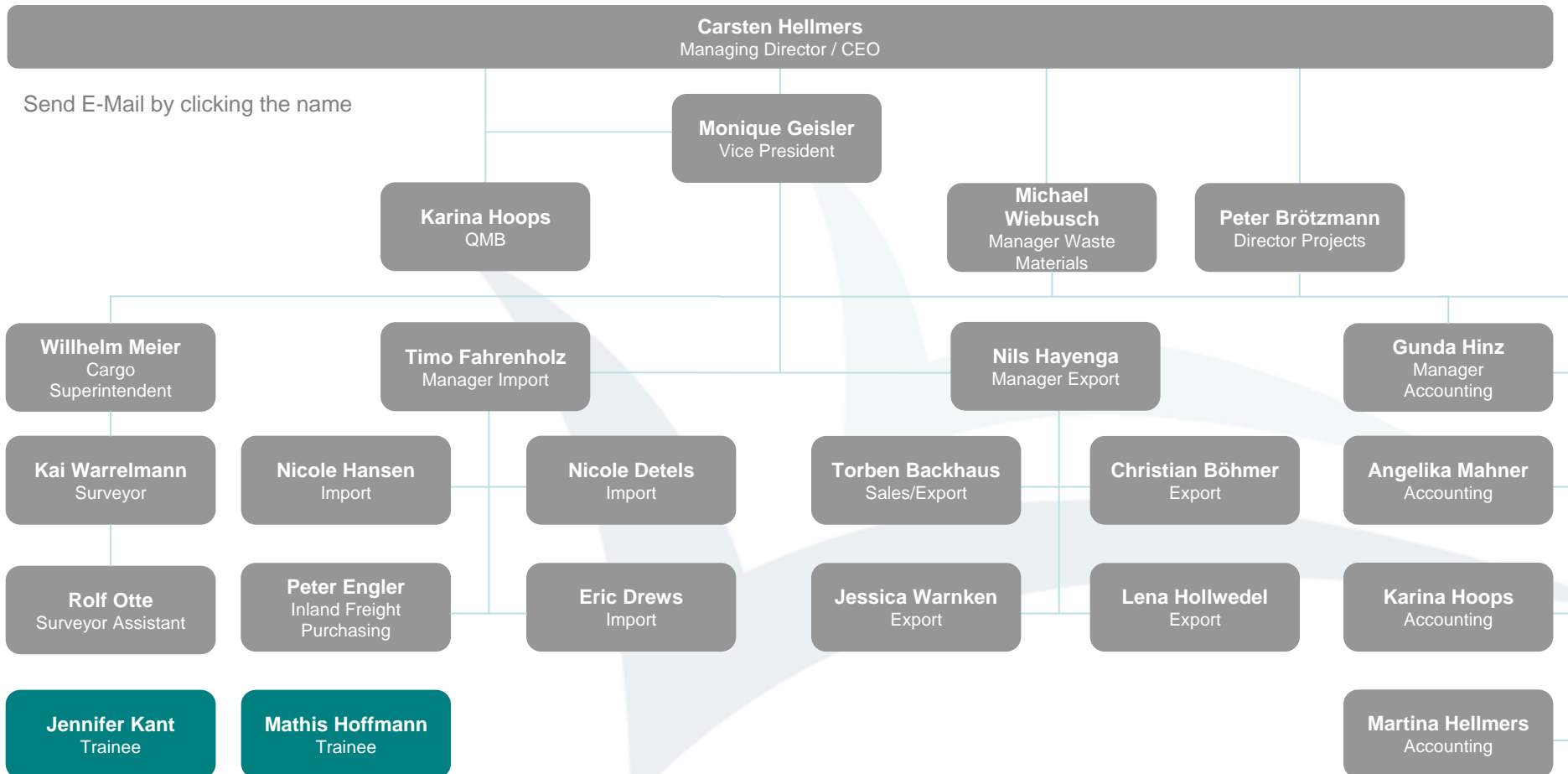
PROJECTS

EXPORT

IMPORT

# EUROPEAN HEADQUARTERS

Excellence, one transaction at a time.



YOU ARE HERE...

COMPANY

PROJECTS

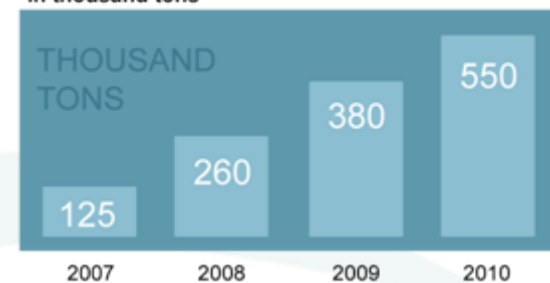
EXPORT

IMPORT

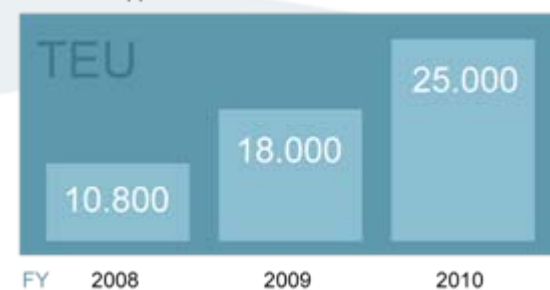
## Statistics review



Annual shipped tonnage (forestry products):  
in thousand tons



Annual shipped TEU:



## Our services – Your advantages

- Just in time logistics all over the world
- Independent terminal operations at any location
- Intermodal operations – rail, truck, barge and heavy haulers
- Highly motivated, flexible and experienced staff
- Excellent connections to the forestry industry
- Chartering coasters for specific, regular or spot lots
- Pulp release – complete handling
- Commercial invoices – control and forwarding
- Claim handling and damage prevention
- Specially trained staff for cargo survey and damage reporting for all types of cargo
- V.NET – V.Alexander’s worldwide **state-of-the-art IT and EDI system**
- Excellent contacts to all major shipping lines – FCL, LCL or break bulk
- Open book policy
- Customs brokerage



### QUALITY CONTROL

Supervision of performance and quality by terminal operator and stevedores  
 Thorough inspection of all transportation devices in the supply chain prior to loading  
 Own personnel trained for cargo, vessel and warehouse survey  
 V. Alexander is certified according to ISO/ICE 9001:2008  
 Cargo survey during loading and unloading  
 Repair of cellulose/paper bales and rolls, plywood sheets  
 Training for correct loading, securing, lashing and stowing  
 Barcode scanner to confirm the specified quantity of goods  
 Addition of new barcode labels  
 Stock control by EDI systems and annual physical stocktaking



We're aware of customer demands

# EUROPEAN HEADQUARTERS

## Leading in forest products & services

V.Alexander Bremen, Germany is well known for its specialization in forest products, pulp and paper.

Import and Export in the world of forest product has its own unique challenges. For cost-containment you have to involve more services from reliable freight forwarder. Take advantage of new ideas and ways to deliver your products to the market on time.

V.Alexander is able to turn your vision into reality, in a quality controlled environment and under your supervision. Our target is to deliver your cargo efficient and reliable to your client.

We can offer customized distribution of your cargo and can help you that your supply chain runs smoothly and on time. We handled over 500,000 tons of forest products in all European ports last year.

## Eye on services

- Documentation Quality Control
- Surveyors on Staff
- Warehousing
- Cross Docking
- On Time Distribution Concepts
- Freight Management
- Process Analysis
- Import/Export
- Clearances
- Project Cargo



# REFERENCES & MEMBERSHIPS

Excellence, one transaction at a time.



Cargo Equipment Experts  
in assn. with



Verein Bremer  
Spediteure e.V.



MEMBERSHIPS

click to browse

YOU ARE HERE...

COMPANY

PROJECTS

EXPORT

IMPORT

# PROJECT INTRODUCTION

Excellence, one transaction at a time.



## HOW TO HANDLE THE REAL BIG OBJECTS

Take a look at a forwarding project to China...

YOU ARE HERE...

COMPANY

PROJECTS

EXPORT

IMPORT

## Process - Behind the scenes

Case: hydroelectric power station ordered by Chinese government

1. Chinese Government issues a call for tenders to the leading companies in this field of business a.m., e.g. Siemens, Alstom, Areva, etc.
2. A part of the calculation also contains the cost of transportation
3. Several transport companies are asked to draw up an offer for the transport of the required goods from the factory to the job site in China. The forwarder has 2-4 weeks to draw up the offer.
4. You have to determine which cargo will fit into containers and which are too big and will have to be packed in wooden crates and cases. Usually, you will ship a combination of the two. Now you have a rough idea of the cargo volume that needs to be shipped.
5. The transport from the factory to the port can be done by trucks, rail, heavy duty trucks or inland waterway barges. In case of heavy duty trucks you'll have to think about permits, police escorts, civil works, overnight transportation, narrow streets, heights of bridges, power cables, legal requirements etc. You need a crane operator to lift the heavy crates onto the trucks. You need a hauler who can provide you with the truck equipment you need: low-bed trailers, dollies or self propelled axle beds.
6. The terminal operator in the port must have the crane capacity to unload the machines.
7. To reduce or even avoid storage costs, you should deliver your cargo shortly before the arrival of the ocean vessel – or even just in time.



## Process - Behind the scenes

Case: hydroelectric power station ordered by Chinese government

**8.** Loading break bulk is more time-consuming – every piece must be handled separately by crane or by forklift. Every piece needs to be inspected and measured by shipping line personnel to determine the total weight and volume of the cargo, which is the basis for invoices or sea freight charges.

**9.** During all of this, the surveyor inspects the cargo for damage to the packaging or the unpacked machines. If any damage is found, the surveyor must notify the forwarder, the client, the shipping line, the warehouse operator, the heavy hauler and any other company involved in the transport. V.Alexander Germany has 3 sworn surveyors among its staff who have the necessary permits to perform these inspections.

**10.** Before the arrival of the vessel in China, our agent has ordered the trucks, low-bed trailers, heavy haulage equipment and of course the mobile cranes to lift the cargo from the ship onto the trucks. Most of the time when shipping heavy lifts you will use a self-geared vessel. These vessels have crane ca-pacities to handle weights up to 1.000 tons or more.

**11.** The next thing to consider is the route from the port to the job site. The entire transport route must be inspected before the transport begins. You need to look for bridges that cannot support the weight of the trucks. You need go through the same steps as you did in Europe for the transport to the port. You must have all necessary permits and arrange for an escort, either by the police or by other government authorities.



## Process - Behind the scenes

Case: hydroelectric power station ordered by Chinese government

**12.** At the job site, the cases, crates, machines and other cargo must be unloaded from the trucks. So again, you will need mobile cranes with sufficient capacity to lift the heavy pieces.

**13.** In some cases your job is done once the cargo has been unloaded at the job site. The consignee signs and stamps your documents and confirms that the cargo has been delivered.

**In other cases** your contract will specify that some machines must be placed onto foundations. This is the case if you are delivering the components for a power station as in our example, and it is your job to erect the generator, turbine, stator or transformer. The foundations vary in height, so the cargo will be lifted by several machines and methods to get shifted from the low bed to the foundation.

**Now – the job is done** (there are many more things to organize, but this is only an introduction)

### Some references:

Submarines about 15,000 freight tons to Korea | Mill equipment about 1,400 freight tons to Mexico |  
Steel plates about 1,000 freight tons to Russia | Crane equipment about 6,000 freight tons to China |  
Compressor/separator about 500 freight tons to Syria | Submarines about 15,000 freight tons to Turkey |  
Paper mill equipment about 11.000 freight tons and unknown volume FCL to Korea |  
Lifeboats about 500 freight tons to Qatar | Lifeboats about 1,000 freight tons to Singapore |

### FURTHER SERVICES

Export packaging, stowing or stuffing  
Contact to packing centers worldwide  
Partnerships/cooperation with project forwarding specialists worldwide



# PROJECT INTRODUCTION

Excellence, one transaction at a time.

## Customs clearance services

V.Alexander is authorized to handle all customs affairs for your company.

Customs clearances at POD, inland and border

Fiscal representation

TIR carnet

Bonded warehousing

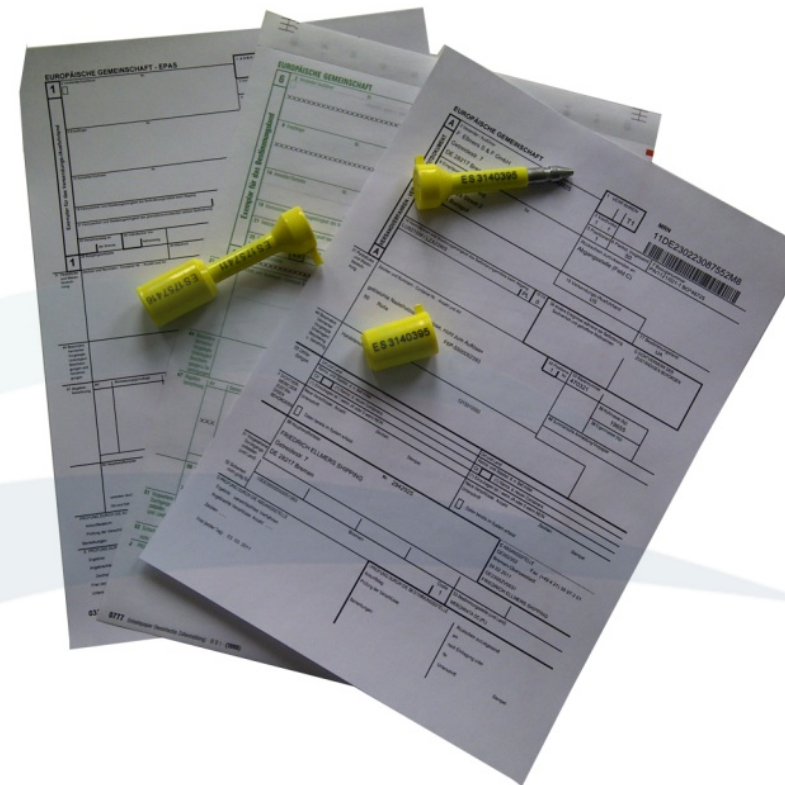
Export clearances at POL and inland

Issuing of EX1 documents

Issuing of T1 document

Issuing of T2L document

Container sealing



# EXPORT INTRODUCTION

Excellence, one transaction at a time.



By air, land and water to destinations all over the world.

YOU ARE HERE...

COMPANY

PROJECTS

EXPORT

IMPORT

## Your one-stop service provider

V. Alexander is a leading forwarder of pulp, paper, wood and general cargo. We export goods to destinations all over the world and work with all known shipping lines. We are connected to a global network of stevedore, warehousing, trucking, barge, rail and coaster companies. We also organize the entire distribution of goods. We will draw up all required export documents and handle all customs matters for your company. We are your one-stop service provider.

### Pre- and oncarriage services

We specialize in transporting your goods (FCL/LCL and break bulk) by air, land and water to destinations all over the world. We offer different types of transport, such as rail, road, barge/coaster, heavyweight and oversized haulage.

**Transport by rail:** special railcars for all types of cargo and containers

**Transport by road:** special trucks, for example for newsprint paper rolls (JOLODA), heavyweight and oversized cargo (flat bed), tipping chassis and lightweight alloy chassis. Normal trucks like tautliner, walking floor, boxed trucks, container chassis (HC and DV) and part loads.

**Transport by water:** barge and coaster services for all types of cargo.

**Transport by air:** for all types of goods.

**We are authorized to handle IMO/dangerous goods**

One of the most important goals of V. Alexander is to find the best way to ship your goods. That means we look for short transit times, competitive rates and the safest way to get your cargo to its destination.



## Export services

### Break bulk services



- Agency services for all break bulk vessels
- Loading of goods
- Survey of goods at the point of risk (terms of delivery)
- Issuing of statements and documentation with pictures
- Warehousing - dedicated warehouses for pulp, paper and general cargo
- Quality and quantity control (physical)
- Barcode and RFID scanning
- Pulp and paper repair and repacking
- Relabeling
- Export clearance
- Commissioning of goods
- Issuing of the bill of lading and all other required documents

### Container services



- Loading of goods
- Survey of goods at the point of risk (terms of delivery)
- Issuing of statements and documentation with pictures
- Warehousing - dedicated warehouses for pulp, paper and general cargo
- Quality and quantity control (physical)
- Barcode and RFID scanning
- Pulp and paper repair and repacking
- Relabeling
- Export clearance
- Commissioning of goods
- Consolidation of LCL
- Securing of cargo

### Loading/Stuffing services



- Dedicated warehouses for pulp, paper, general cargo with special equipment for handling
- Loading of break bulk vessels and stuffing of containers
- Quantity control (physical)
- Issuing of packing lists
- Physical quality control by our own specially trained personnel
- Issuing of complete "statements of facts" including photos
- Repair and cleaning of damaged cargo by our own specially trained personnel
- Physical quality control of empty containers and break bulk vessels
- Control of fastening equipment by special warehouse staff
- LCL and LCL consolidation

# EXPORT INTRODUCTION

Excellence, one transaction at a time.

## Export clearance services

V.Alexander is authorized to handle all customs affairs for your company.

Export clearances at POL and inland

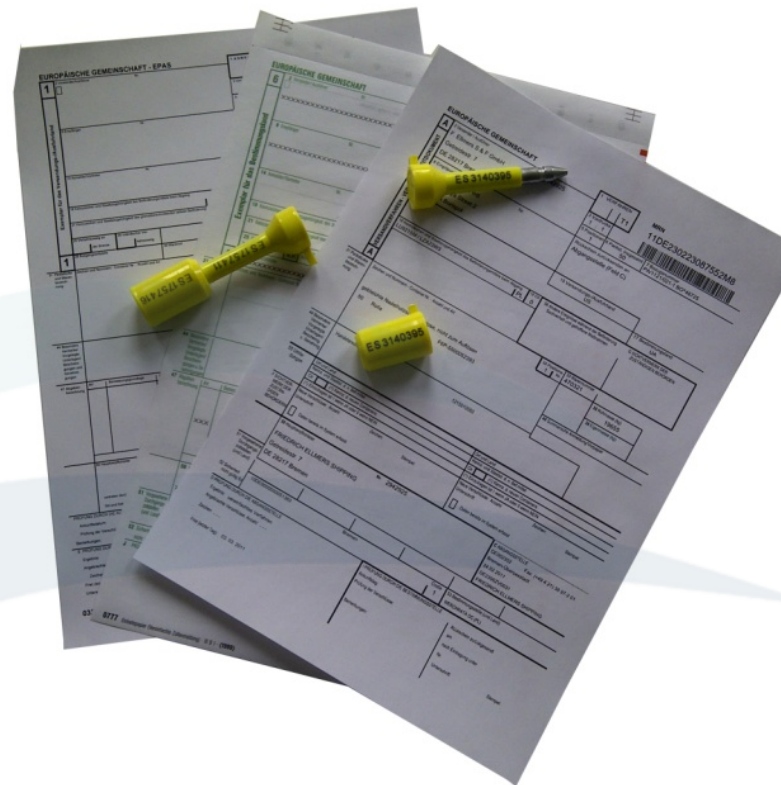
Issuing of EX1 documents

Issuing of T1 document

Issuing of T2L document

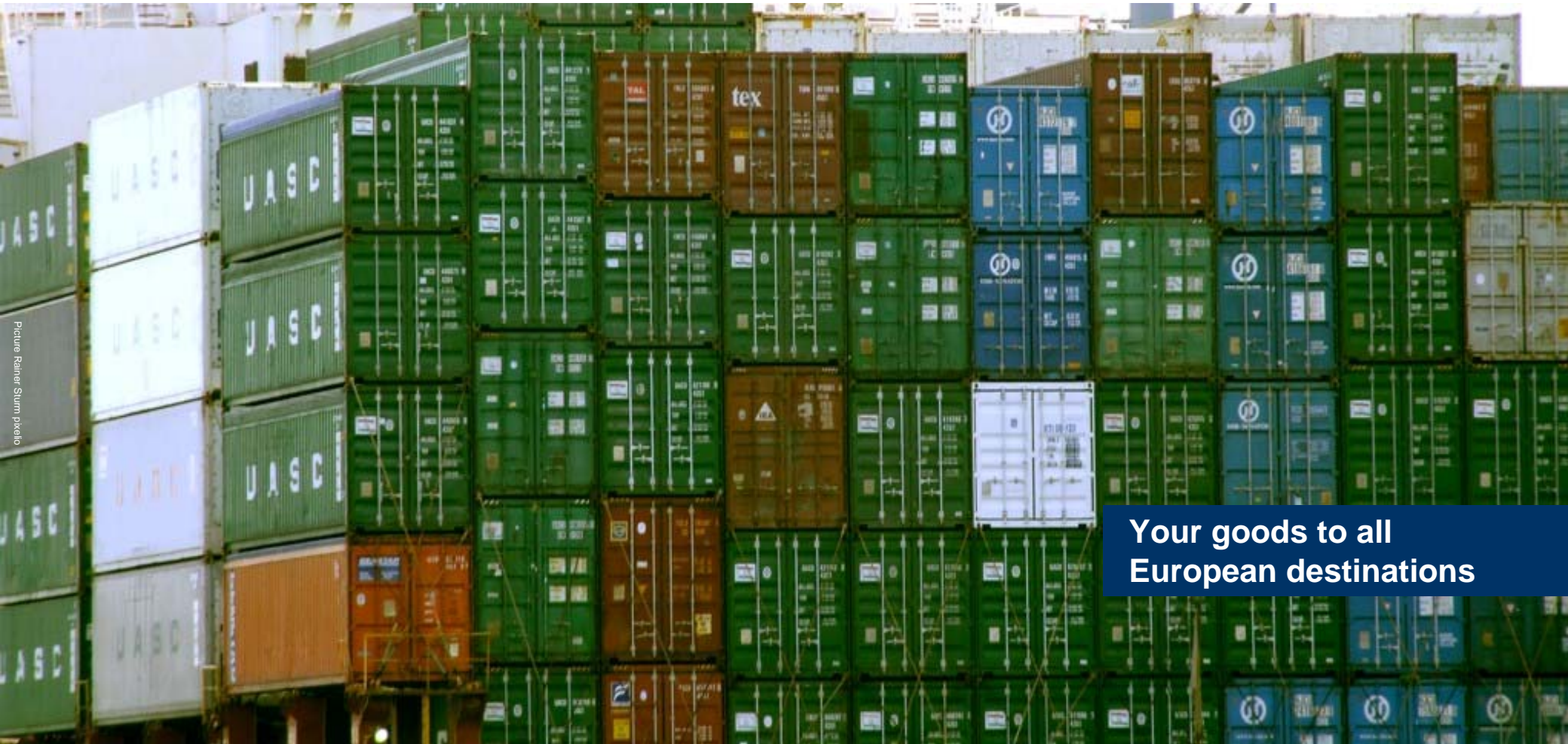
Bonded warehousing

Container sealing



# IMPORT INTRODUCTION

Excellence, one transaction at a time.



Your goods to all  
European destinations

YOU ARE HERE...

COMPANY

PROJECTS

EXPORT

IMPORT

Picture: Rainier Sturm pixelio

# IMPORT INTRODUCTION

## Your one-stop service provider

V. Alexander is a leading forwarder of pulp, paper, wood and general cargo. We import goods from all over the world to Europe/Germany and work with all known shipping lines. We are connected to a global network of stevedore, warehousing, trucking, barge, rail and coaster companies. We also organize the complete distribution of goods in Europe. We are able to issue all required documents and handle all customs affairs for your company. We are your one-stop service provider.

### Transport services

We specialize in air, land, and water transports of your goods to all European destinations. We offer different types of transport, such as rail, road, barge/coaster, heavyweight and oversized haulage.

**Transport by rail:** special railcars for all types of cargo and containers

**Transport by road:** special trucks, for example for newsprint paper rolls (JOLODA), heavyweight and oversized cargo (flat bed), tipping chassis and lightweight alloy chassis. Normal trucks like tautliner, walking floor, boxed trucks, container chassis (HC and DV) and part loads.

**Transport by water:** barge and coaster services for all types of cargo.

**Transport by air:** for all types of goods.

**We are authorized to handle IMO/dangerous goods**

One of the most important goals of V. Alexander is to find the best way to ship your goods. That means we look for short transit times, competitive rates and the safest way to get your cargo to its destination.



## POD Europe - Import services

We are a partner of the pilot project  
“Cellulose bales controlled by self-dissolving RFID chips”

### Break bulk services

- Agency services for all break bulk vessels
- Discharging of goods
- Survey of goods at the point of risk (terms of delivery)
- Issuing of statements and documentation with pictures
- Warehousing - dedicated warehouses for pulp, paper and general cargo
- Quality and quantity control (physical)
- Barcode and RFID scanning
- Inventory reporting
- Pulp and paper repair and repacking
- Relabeling
- Customs clearance
- Commissioning of goods
- Issuing of delivery notes and transport doc.

### Container services FCL/LCL

- Discharging of goods
- Survey of goods at the point of risk (terms of delivery)
- Issuing of statements and documentation with pictures
- Warehousing - dedicated warehouses for pulp, paper and general cargo
- Quality and quantity control (physical and by EDI)
- Barcode and RFID scanning
- Inventory reporting
- Pulp and paper repair and repacking
- Relabeling
- Customs clearance
- Commissioning of goods
- Issuing of delivery notes and transport doc.
- Distribution of cargo in Germany and Europe

### Warehousing services

- Dedicated warehouses for pulp, paper, general cargo with special equipment for handling
- Unloading of break bulk vessels and containers (FCL/LCL) directly at the warehouse
- Physical quantity control with packing lists and EDI scans
- Physical quality control by our own experts
- Issuing of complete “statement of facts” including photos
- Repair and cleaning of damaged cargo by our own specially trained personnel
- Daily, weekly, monthly and annual inventory reports
- Physical quality control of all means of transportation
- Control of fastening equipment by experts
- Bonded warehouses

# IMPORT INTRODUCTION

Excellence, one transaction at a time.

## Customs clearance services

V.Alexander is authorized to handle all customs affairs for your company.

Customs clearances at port, inland or border

Issuing of T1 documents

Fiscal representation

Carnet TIR

Bonded warehousing



# FINAL POINT



**End of the presentation.  
Beginning of a great relationship.**  
Welcome to V.Alexander International Logistics Germany